



Partnership Overview

Uniting, equipping, & amplifying a Jesus-centred movement

Welcome to the conversation!

Here's a summary of what's in this package:

Why Jesus Collective?

- The story and vision behind Jesus Collective
- Who Jesus Collective is 'for'
- How we can advance the Kingdom together

What is our shared centre?

- Our paradigm & core faith expressions

How do churches and leaders engage with Jesus Collective?

- Ongoing engagement with Jesus Collective
- A closer look at Jesus Collective Partnership

Making Jesus Collective sustainable. Guiding financial principles and expectations

Next steps. An invitation to partner together



The (short) story behind Jesus Collective

God is at work raising up a movement. People all around the world are catching a vision for what it means to worship and follow a Jesus-looking God, and advance a Jesus-looking Kingdom. We hear so many personal stories from churches, pastors and ministry leaders searching for a rallying point for this Jesus-centred movement; a place of peer encouragement and resourcing; a place to learn, be developed and equipped alongside like-minded peers; a place to contribute our gifts; a place where we can cultivate unity while practicing and introducing more people to the Jesus-centred Way.

It's all about Jesus. Jesus Collective's roots are in the Anabaptist Radical Reformation of the 16th century, but we're not hung up on labels. We want to cast a welcome call to like-minded and like-hearted churches, leaders, and ministries from diverse backgrounds and contexts who share a radical commitment – not just to believing and saying the right things – but to putting Jesus at the centre of everything; living and leading like Jesus, sharing the Good News, and discipling others to do the same.

But the movement is fragmented and under-equipped. Uniting and better resourcing this movement can help it bear its most effective witness to a world desperate for the Good News. We have an exciting opportunity to partner with God in shaping and giving voice to the next generation of the Jesus-centred church, and forming and equipping the next generation of disciple-making servant leaders for ministry in an increasingly post-Christian world.

Together we can advance a peaceful, Jesus-centred Way. We want to offer much more than a set of theological distinctives and traditions. Together we can help shape and share a blueprint for healthy, Jesus-centred relationships and discourse within the Kingdom and for evangelism to the world. Together, we want to model what it means to practice Jesus-centred life, leadership, and ministry. As a centred-set network, we want to offer a space where we are each clear about our convictions rooted in the Jesus of scripture, but equally clear that we embrace, seek unity with, and have much to learn from all Christians.

So we set about the exciting journey of establishing Jesus Collective. Together.



What's the vision for Jesus Collective?

We aspire to

UNITE,

- Relational emphasis; countering the fragmentation & isolation of this movement
- Safe space of belonging, collaboration, and support for churches and leaders
- We are more effective together – Kingdom unity is a priority

John 17

EQUIP,

- Developing, curating, sharing high quality Jesus-centred ministry resources
- Forming, training, and developing future ready leaders for the movement
- Using technology wisely to break down barriers and connect people better
- 'How-to' practical support; equipping churches and leaders to be their best

2 Timothy 2:2

& AMPLIFY

- Helping make the movement more visible, accessible, and cohesive
- Creating a peaceful and welcoming voice for the Jesus-centred Way
- Defined by what we are for, not what we are against

**Matt 28:18-20
John 12 & 14**

a Jesus-centred
movement.

- Shaping solid, well-rooted, Jesus-centred theology and practices
- Rooted in the Anabaptist Radical Reformation, but not hung up on labels
- Solid convictions. Diverse people from many contexts. Acceptance ≠ agreement.
- Centred-set paradigm; modeling practices of dialogue and inclusion
- Relational peer network within a broader movement; not a denomination

**Matt 7:24-29
1 Peter 1:21**



Who is Jesus Collective for?

This is a relational network for churches, pastors, and ministry leaders who...

Resonate deeply with Jesus-centred values and have a high value for scripture, regardless of context, label or background

Believe that now is the time to bring together and resource this Jesus-looking Kingdom movement alongside like minded churches and peers

Want to champion a 'third way' -- caring deeply about our convictions, yet choosing in our differences to unite around Jesus

Want to go beyond 'beliefs', rolling up our sleeves to learn, live and share the Jesus-centred way of life and leadership. Together.

Are hungry for belonging, formation, and practical equipping to support forward-thinking mission & growth in a post-Christian context

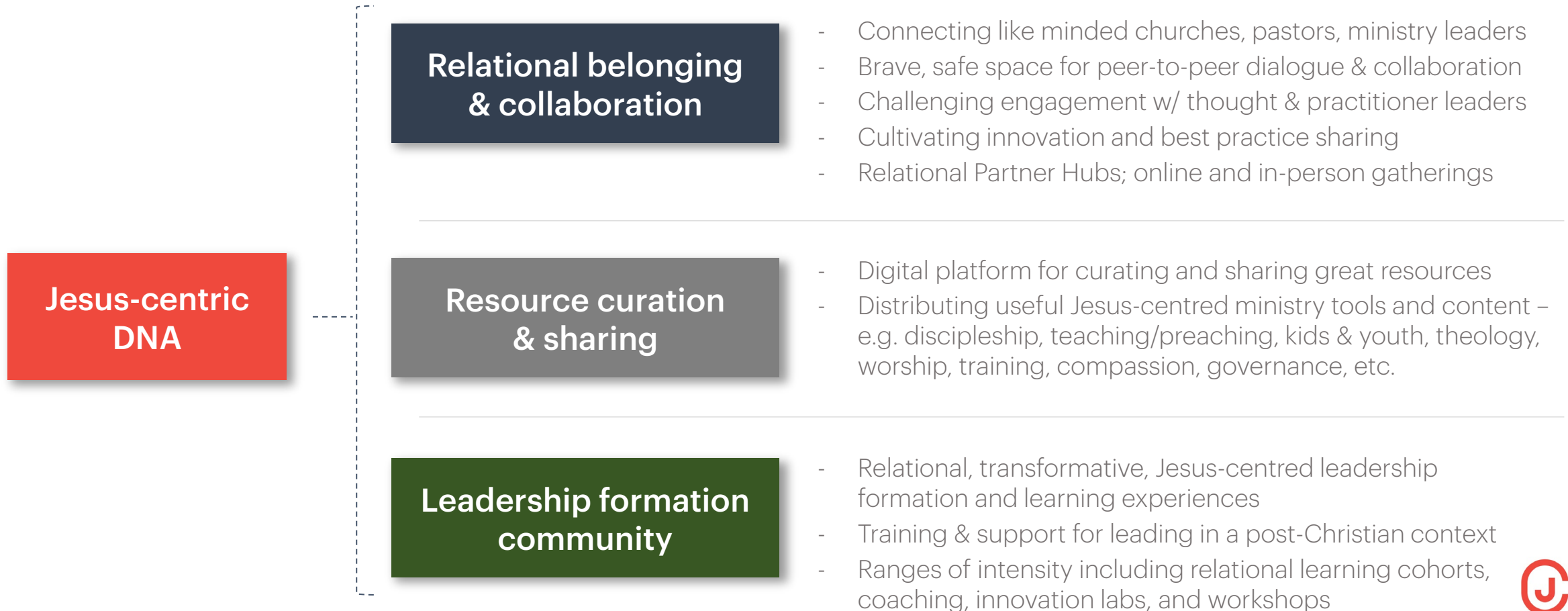
Value collaboration and best practice sharing among aligned but diverse leaders & church expressions from a variety of backgrounds

Are part of an existing church, ministry, or network that could both benefit from and contribute to the strength of the network



So how can we advance the Kingdom together?

Our research and discernment has pointed us to 3 primary areas of focus:



What is our shared paradigm?

We are a **centred set community**...

We take our shared theological core seriously, but want to go beyond simply 'believing the right things'. We are a relational network that equips leaders and churches in the Jesus Way. The orientation of our hearts – and our ongoing movement – towards Jesus as the focal point of our faith and lives is what defines and unites us as a collective.

... offering a **third way**.

We are clear in our convictions while creating space for belonging and open discussion. We choose to encourage, listen to, learn from, and unite with each other, and with all Christians, including those with whom we disagree.

WE ARE RELATIONAL. We are communal and collective by design. We bring our real selves to the table and strive to nurture healthy relationships with each other. We move at the speed of relationship.

WE ARE ON MISSION. We desire to equip our churches and each other to turn outward and introduce more people to the Jesus Way, especially those who have not heard the Good News before.

WE PURSUE PEACE. With friends and enemies, and fellow believers from all contexts. We seek to live actively peaceful, hospitable, generous, and reconciled lives. We live simply and focus on the essential. We communicate and behave transparently.

WE EMBRACE GROWTH. Healthy things grow. We seek to grow leaders and expand the Kingdom's visibility, accessibility, and impact.

WE VALUE DIVERSITY. The Kingdom is most fully represented -- and the best ideas are created -- when a diversity of people and voices are included; especially men and women from different races, ethnicities, traditions, and denominational contexts.



What is our shared centre?

While we're all in different places on our journey, below are the core faith expressions that we are moving toward together as a Jesus-centred community. We invite conversation about these ideas as part of building a relationship with Jesus Collective Partners, vs. using them legalistically to draw hard dividing lines.

Core Faith Expressions

Jesus is Lord.

God is Love.

The Holy Spirit empowers.

We are valuable. | Something is wrong.

Saved by grace. | Faith is following.

Scripture is inspired. | Peace is the way.

We are Kingdom citizens and ambassadors.

* [See Shared Centre document for longer version](#) *



Lived Implications

Free will. Human will is freed by God to trust or reject him. Baptism is a symbol of our freely chosen faith.

New covenant atonement. The cross seals a new covenant, offering forgiveness and freedom to everyone.

Evangelism & eternity. We learn, live, and give the Good News to anyone with ears to hear. God is the final judge; we are not.

Equality in ministry. We encourage all mature and gifted believers towards all expressions of leadership in the Church.

Human sexuality. We bring an understanding of sexuality and marriage that aligns with the historic church and Anabaptist movement, while welcoming and learning from leaders and churches with diverse biblical interpretations of this issue. Regardless of where we each land theologically, we are clear about our convictions while seeking unity and peace within our network and with all Christians.



Ongoing engagement with Jesus Collective

How do churches and leaders get involved?

Advisory Board

**Strategic leadership core –
advising on direction and priorities**

Smaller group; rotating membership

Stewards the Partnership application
process; welcomes in new Partners

Responsible for governance of Jesus
Collective

Partners

**Churches and individual ministry
leaders together forming the main
relational ‘body’ of Jesus Collective**

Welcomed into covenant through a
relational application process

Embrace the shared vision, paradigm
and activities of Jesus Collective

Join ongoing relational Partner Hubs for
belonging and collaboration

Retain any existing identity / affiliations

Contribute gifts, experience, and
finances to sustain and grow Jesus
Collective

Friends (coming soon)

**See value in associating with or
using resources available through
Jesus Collective**

Varying degrees of relational
investment and alignment with the
Jesus Collective core (That’s okay.)

Attend events, subscribe to a
particular resource or set of
available resources

Contribute financially for
resources used

Also includes donors and
supporters



What does it mean to be a 'Partner'?



Partners

- ✓ Churches
- ✓ Ministries
- ✓ Pastors*
- ✓ Leaders*
- ✓ Denominations
- ✓ Canada, US, or International

* i.e. not formally representing their church or ministry

Partners come from different places, backgrounds, and contexts, but what we have in common is our passion and commitment for placing Jesus at the centre of our lives and ministries. Jesus Collective Partnership is envisioned as a meaningful source of relationship and equipping for churches and leaders who may or may not already belong to a denomination or other network.

Partners experience the following together in the context of a collective community:

- Relational belonging and collaboration in Partner Hubs
- Unique connection and equipping spaces like innovation labs and focused workshops
- Access to curated, shared resources, and an invitation to contribute resources to the network
- Part of a leadership community with access to leadership development and formation experiences
- Speak into the design of Jesus Collective offerings and the network's priorities
- Partnership is available to churches, ministries, and individual Pastoral and Ministry leaders
- Partners enter into a shared covenant together that affirms our shared vision, shared paradigm, and shared set of activities as a network. [You can preview the Partner Covenant here.](#)



A closer look at Partnership

**Relational
belonging &
collaboration**

**Resource
curation
& sharing**

**Leadership
formation
community**

Partners are the relational backbone of Jesus Collective:

- Join facilitated Partner Hubs with 10-12 other Partners (see next page)
- Invited to attend Partner retreats with all Partners for relationship building, spiritual practices, collaboration, and to speak into Jesus Collective vision and priorities
- Opportunity to participate in the Jesus Collective Theology Track for ongoing theological discourse and input into Jesus Collective's theological core and direction
- Complete comprehensive profiles on the secure Jesus Collective digital platform – able to search and connect with other like minded church and leader partners in the network
- Use of the Jesus Collective digital platform to form relational groups with other partners around topics of interest, shared challenges, geographic proximity, etc.
- Church Partners will be listed on the Jesus Collective church directory – searchable by the public on jesuscollective.com
- Invited to participate in Jesus Collective innovation labs and development workshops with other Partners – coming together collaboratively to share best practices, solve issues and ideate for mission, and receive equipping/training in specific ministry areas.



A closer look at Partnership

**Relational
belonging &
collaboration**

**Resource
curation
& sharing**

**Leadership
formation
community**

Partner Hubs are a primary vehicle for ongoing relationship:

- Ideally 10-12 Partners grouped together in a Hub by region, ministry context, or theme
- Meet online monthly; plus in person gatherings and ad hoc communication as mutually agreed/desired; encouraged to develop organic relationships
- Led by peers from within the network who are trained and supported by Jesus Collective
- Hubs have a group identity on the Jesus Collective online platform for communication and resource sharing among Hub members
- Mix of grassroots local agenda + topics proposed and supported by Jesus Collective
- Opportunity for peer to peer encouragement, support
- Brave, safe space to raise theological issues and missional challenges and opportunities
- Forum for practical collaboration, innovation and best practice sharing
- Regular engagement with thought leaders facilitated by Jesus Collective
- Church Partners invited to place multiple Pastors and leaders in Hubs as they see fit
- Encouraged to multiply and birth additional Hubs as a means of expanding the network



A closer look at Partnership

**Relational
belonging &
collaboration**

**Resource
curation
& sharing**

**Leadership
formation
community**

Partners can utilize a pool of high quality Jesus-centred ministry resources:

- We are building a digital platform where we aspire to house a searchable database of Jesus-centred ministry tools and resources contributed by churches and leaders within Jesus Collective. The Meeting House will be contributing its resources initially and we are inviting other churches to submit high quality resources to share with the network over time. Resources will be vetted to ensure alignment, quality and usefulness.
- Resource categories to include sermons/teaching series, leadership training, discipleship courses, kids and youth ministry, compassion/peace/outreach, governance and operations. Church Partners will have unlimited access to this resource inventory on the Jesus Collective digital platform for use in their church context.
- Church Partners will also have a full subscription to The Meeting House Kids & Youth Curriculum – a unique, modern Jesus-centred curriculum rooted in Anabaptist values.
- Partnership also includes access to resources and relationships available through other Jesus Collective strategic ministry partners (for illustration only -- currently in discussion with World Vision, Mennonite Central Committee, 24-7 Prayer, etc.)



A closer look at Partnership

**Relational
belonging &
collaboration**

**Resource
curation
& sharing**

**Leadership
formation
community**

Partners have access to a range of leadership formation experiences:

- **Online Learning Collectives** – challenging 6 week, cohort-based development experiences with peer leaders, including weekly spiritual practices, facilitated small group learning, live Interaction with thought leaders, coaching or spiritual direction, interactive online forums, and curated learning resources. Designed to equip leaders for Jesus-centred leadership and mission in a post-Christian context.
- **Professional Coaching (for Church Partners)** – 12 hours of individual or team coaching per year from a trained Jesus Collective coach; support for developing ministry plans, navigating issues, discerning vision.
- **Crucible Conversations** – Intentionally pairing needs of Partners with expertise of other Partners to catalyze growth and transformation, especially when leaders/churches are working through challenges or have hit plateaus in their own experience or expertise.
- **Interactive Live Podcasts** – Live, online interactive conversations with thought leaders and practitioners; Opportunities to meet other like-minded leaders in the movement.
- **Developmental courses & workshops** developed in response to Partner need/interest.



A closer look at Partnership



Individual Partners

Individual Partners are invited to participate in Jesus Collective Partner activities as an individual leader:

- Join a Partner Hub with other Partners
- Space of belonging in the Jesus Collective community, building relationships with and learning from peer Pastors and ministry leaders
- Create an individual profile and connect with other leaders and churches on the Jesus Collective website
- Pursue personal leadership formation and development experiences as desired, at reduced cost
- Access to live and recorded Partner media and content and leadership resources online
- Invited to attend all Partnership gatherings
- Speak into vision and direction of Jesus Collective
- Contribute gifts and seek ways to get involved in Jesus Collective events and ministry
- Opportunities to be trained and developed to help lead Jesus Collective experiences



Church or Ministry Partners

Church and Ministry Partners are invited to engage multiple leaders or your whole leadership team in Jesus Collective Partner activities, and also engage in some ways that are unique to Church Partners.

- Enrol multiple leaders in Partner Hubs
- Create profiles for your church and leadership team members
- Suggest customized development experiences for your leaders
- Access to innovation labs and outcome-focused workshops in collaboration with other Partner Church leadership teams
- Access to shared church ministry resources (teaching, kids and youth curriculum, leadership training, etc.)
- Professional coaching for your leadership team or individual members of your leadership team
- Access to relationships with ministry partners (e.g. World Vision, MCC, etc.)
- Participate in leadership internships with other Partner Churches

Expectations of Jesus Collective and Partners

Jesus Collective

- Create a catalytic, transformational environment for the vision of Jesus Collective to thrive
- Activate and serve the 'Collective' – Facilitate connection between Partners; gather, respond to and incorporate Partner feedback and input on a continuous basis
- Steward overall administration of network, formal governance, reporting and communication, agreed upon levels of support and connectivity among Partners
- Equip and empower leaders from within the network to engage in events and experiences and facilitate Partner Hubs; train and source coaches to provide coaching
- Core leadership team staffed and operated within The Meeting House structure initially, with vision of evolving to be a separately governed entity in time

Partners

- Enter into partnership covenant, including affirming core faith expressions (discerned through conversation)
- Keep existing identity and/or denominational affiliation; encouraged to reference Jesus Collective Partnership
- Church Partners: Contribute 1.5% of overall income towards operation of Jesus Collective (capped for larger churches).
- Individual leader Partners: Contribute \$850 CAD annually (Approx. \$650 USD).
- Seek ways to contribute sacrificially to the network (gifts, resources, mentorship, etc.)
- Help plan / speak into network priorities, gatherings and events
- Some partners may also:
 - Serve on the Jesus Collective Advisory Board, but this is not an expectation of partnership
 - Consider contributing resources and content to the shared resource pool, subject to vetting process (e.g. sermons, discipleship resources, training, best practices)
 - Consider being a coach, or Partner Hub leader



Intended Evolution of Jesus Collective

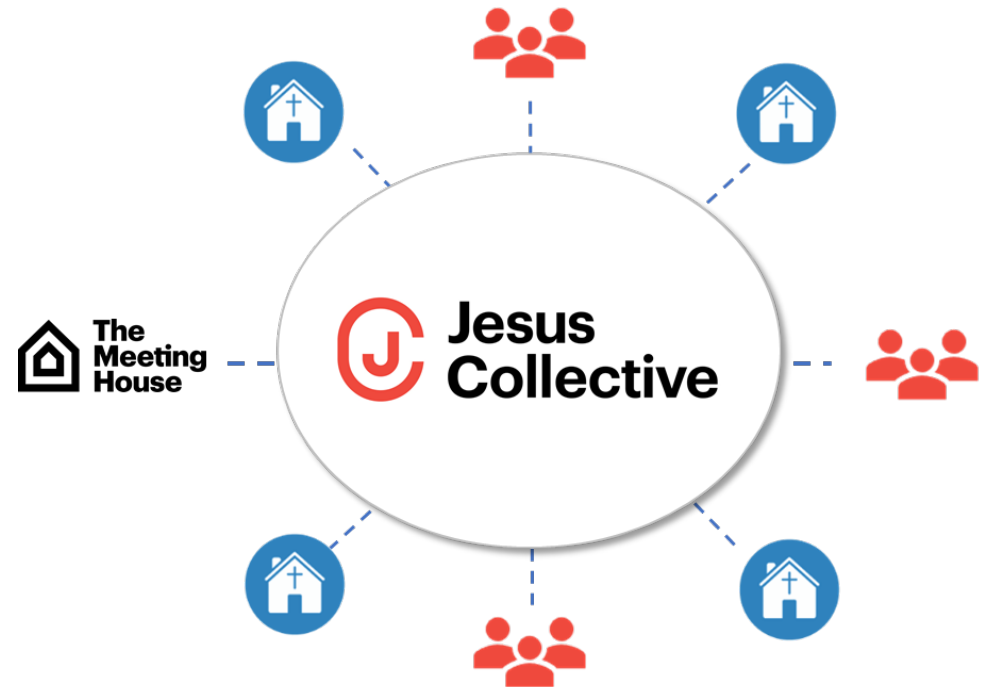
Our roots

Jesus Collective was birthed within The Meeting House structure and governance



Long term vision

Jesus Collective is on track to become an independent entity, stewarded and governed by its dedicated partners



Making Jesus Collective Sustainable

Guiding financial principles

- **Sustainable Kingdom Impact.** Sustain and maximize the Kingdom work of Jesus Collective vs. create 'profit'
- **Sacrificial Commitment.** Calling partners to a culture of collective shared ownership and pooling of resources
- **Inclusivity.** Accessible for aligned churches and leaders, including those who can't afford to contribute
- **Transparency.** Open, ongoing reporting and information sharing among committed Partners

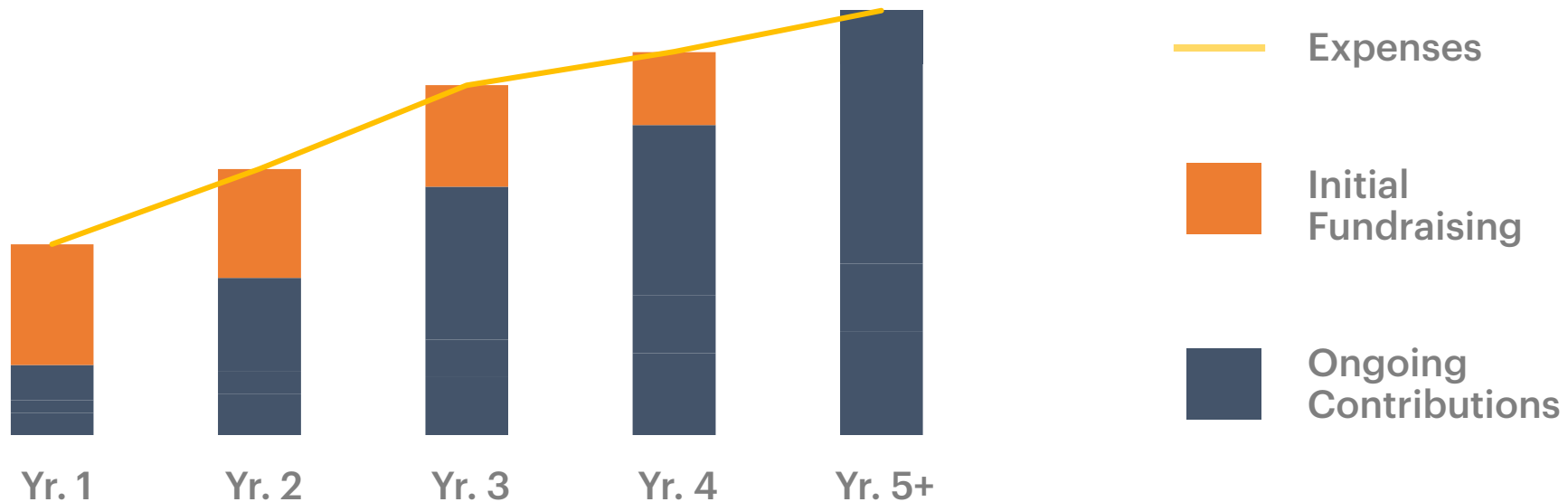
Partner Expectations

- Churches: Contributing 1.5% of overall income to the shared resource pool (capped for larger churches)
- Individual leaders not officially representing a church: flat contribution of \$850 CAD / yr. (Approx. \$650 USD / yr.)
- Partners invited – not expected – to contribute beyond the minimum threshold



Making Jesus Collective Sustainable

- The Meeting House has invested \$600k in the Jesus Collective pilot and is now raising additional funds from within to support development while the Jesus Collective Partner base solidifies and grows
- Jesus Collective is aiming to raise \$1m from other investors and donors over the next 3 years to help support the next 5 years of development
- The goal is for Jesus Collective to be self-sustainable operationally and financially within 5 years through a mix of ongoing Partner and Friend contributions and donations



Where do we go from here?

Next steps towards Partnership...

- This document is meant to provide helpful background and clarity, but we would like to dialogue relationally with prospective Partners and/or your leadership teams to unpack questions, and advance the conversation further.
- Interested parties are invited to explore Partnership by completing a [Partnership application](#) as a next step. This doesn't commit anyone to anything, but begins a process that includes interaction with Jesus Collective leadership, other prospective Partners, and ultimately entering into a mutual Partnership covenant.

Other ways to engage with the Jesus Collective community...

- Online Learning Collectives (OLCs) – Our next OLC is in Spring 2021: “The Inner Life of an Effective Leader”
- Track with our series of online interactive leadership podcasts
- Other learning and development engagements throughout 2021
- Ask us about joining one of our Partner Hubs on a trial basis
- Online Partner Retreat scheduled for May 2021 for Partners and those exploring Partnership

Reach out to us at connect@jesuscollective.com with any questions or for more information!

